

DX-M

CR SOLUTION

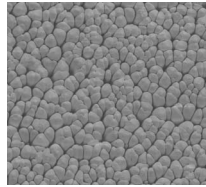
The next generation CR System for Digital Mammography and General Radiography.

- For digital mammography and general radiography
- Excellent image quality
- Drop-and-go cassette buffer
- Broad range of applications
- Both needle-based detectors and standard phosphor plates

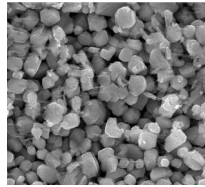


The next-generation in CR for digital mammography and general radiography, the DX-M digitizer unites excellent image quality with the convenience of supporting both standard phosphor plates and needle-based detectors. With a user-friendly drop-and-go buffer that can handle a mix of five cassettes of different sizes, workflow is smoother and more productive. The DX-M can be used as a centralized or decentralized digitizer in the radiography department, supporting digital mammography and general radiography. In a centralized environment, it can serve multiple rooms. At the same time, its small footprint means it can be placed in areas where space is limited.





Needle-based detector



Powder phosphor plate



Excellent image quality

By supporting both standard phosphor plates and needle-based detectors, the DX-M unites complete convenience with top image quality, while leveraging a radiography department's existing investments. With standard phosphor plates, the DX-M delivers excellent image quality. When used with Directrix needle-based detectors, the DX-M provides excellent image quality with a much higher Detective Quantum Efficiency (DQE).

Broad range of applications

The combination of needle-based detectors, standard phosphor plates with specific cassettes and image resolution mode makes the DX-M ideal for a broad range of applications:

- General radiography
- Digital mammography (available with needle-based detectors only)
- Orthopaedics - extremities
- Dental
- Pediatrics and neonatal
- Full Leg/Full Spine

It offers three different image resolution modes: 50 μm pixel pitch (20 pixels/mm), 100 μm pixel pitch (10 pixels/mm) and 150 μm pixel pitch (6.7 pixels/mm).

Maximum productivity and smooth workflow

The drop-and-go buffer and fast preview eliminate waiting times and facilitate a continuous workflow within the department. The five-cassette drop-and-go buffer can handle a mix of mammography and general radiography cassettes as well as a mix of different sizes of both needle-based detectors and standard phosphor plates. The automatic cassette handling makes DX-M highly productive and user-friendly.

Using DX-M as a central digitizer in the radiography department, multiple examination rooms can be supported. With its small footprint, it can fit into tight spaces, including the X-ray room or even a narrow corridor.

The right choice

To eliminate any confusion, needle-based detector cassettes are gray, while standard phosphor plate cassettes are orange to help the user more easily select the desired cassette. Each plate has an embedded memory that stores the data entered during identification by no-touch radiofrequency tagging. Thus, the identification data and images are linked from the beginning throughout the entire digital processing system.

SAFETY

Region	Safety	EMC	Laser
EUROPE	IEC 60601-1:1988 + A1:1991: + A2:1995	EN 60601-1-2:2007 EN 300 330 2 V1.1.1:2001 EN 301 489 V1.3.1:2001	60825-1:1993 + A1:1997 + A2:2001
USA	UL60601-1:2003	FCC part 15	CFR parts 1040.10 and 1040.11
CANADA	CSA C 22.2 No.601.1:1990 + S1:1994 + A2:1998	CSA C 22.2 No. 601.1.2	CSA-E60825-1-03

Needle-based detector: general radiography and mammography



Standard phosphor plate: general radiography



Needle-based detector

- CR HD5.0 General SR
- CR HD5.0 General

- CR HD5.0 AEC

- CR HD5.0 FLFS
- CR HM5.0 Mammo

Size

13.77 x 16.92 in (35 x 43 cm)
 13.77 x 16.92 in (35 x 43 cm)
 9.44 x 11.81 in (24 x 30 cm)
 7.08 x 9.44 in (18 x 24 cm)
 5.90 x 11.81 in (15 x 30 cm)
 13.77 x 16.92 in (35 x 43 cm)
 9.44 x 11.81 in (24 x 30 cm)
 7.08 x 9.44 in (18 x 24 cm)
 13.77 x 16.92 in (35 x 43 cm)
 9.44 x 11.81 in (24 x 30 cm)
 7.08 x 9.44 in (18 x 24 cm)

Spatial resolution

6.7 pixels/mm
 10 pixels/mm
 10 pixels/mm
 10 pixels/mm
 10 pixels/mm
 10 pixels/mm
 10 pixels/mm
 10 pixels/mm
 20 pixels/mm
 20 pixels/mm

Pixel matrix

2272 x 2800
 3408 x 4200
 2256 x 2880
 1656 x 2280
 1344 x 2880
 3408 x 4200
 2256 x 2880
 1656 x 2280
 3408 x 4368
 4708 x 5844
 3508 x 4644

Standard phosphor plate

- CR MD4.0R General SR
- CR MD4.0R General

- CR MD4.0R FLFS

Size

13.77 x 16.92 in (35 x 43 cm)
 13.77 x 13.77 in (35 x 35 cm)
 13.77 x 16.92 in (35 x 43 cm)
 13.77 x 13.77 in (35 x 35 cm)
 9.44 x 11.81 in (24 x 30 cm)
 7.08 x 9.44 in (18 x 24 cm)
 5.90 x 11.81 in (15 x 30 cm)
 13.77 x 16.92 in (35 x 43 cm)

Spatial resolution

6.7 pixels/mm
 6.7 pixels/mm
 10 pixels/mm
 10 pixels/mm
 10 pixels/mm
 10 pixels/mm
 10 pixels/mm
 10 pixels/mm

Pixel matrix

2320 x 2832
 2320 x 2320
 3480 x 4248
 3480 x 3480
 2328 x 2928
 1728 x 2328
 1440 x 2928
 3480 x 4392

Technical Specifications

GENERAL

Drop-and-go cassette buffer

- 5 cassettes of mixed sizes input buffer and 5 cassettes of mixed sizes output buffer

Throughput

- 14 x 17 in (35 x 43 cm) = approx. 83 plates/hour

Display for status and error indication

- LCD touchscreen
- LED status indicator

Greyscale resolution

- **Output to processor:**
16 bits/pixel square root compressed

Dimensions and weight

- **Covered floor space:** (W x D x H):
26 x 20 x 48.4 in (66 x 51 x 123 cm)
- **Output buffer included:** (W x D x H):
43.5 x 20 x 48.4 in (115 x 51 x 123 cm)
- **Weight:** approx.: 397 lbs (180 kg)

Configuration requirements

- NX Workstation and Workflow
- ID tablet
- CR HD5.0 Detectors and Cassettes
- CR MD4.0R Plates and Cassettes
- Either CR HM5.0 MAMMO Detectors and Cassettes

Power

- 120 V/60 Hz (USA)
Standby 92 W, peak 621 W, fuse 15 A

Environmental conditions DX-M digitizer

- **Temperature:** 59 - 86° F (15 - 30° C)
- **Temperature:** for use with CR HM5.0 MAMMO Detector: 68 - 86° F (20 - 30° C)
- **Humidity:** 15 - 75 % RH
- **EMC compliant with IEC 60601-1-2**
- **Rate of change of temperature:**
0.9° F/minute (0.5° C)

Environmental effects

- **Noise level:** max. 65 dB (A)
- **Heat dissipation:** standby 92 W, continuous operation 242 W

SAFETY

Approvals

- ETL classified CUS, CE

Transport details

- **Temperature:** -13 to 131° F (-25 to +55° C),
-25° C for max. 72 hours,
+55° C for max. 96 hours
- **Humidity:** 5 - 95 % RH

DX-M

Agfa and the Agfa rhombus are trademarks of Agfa-Gevaert N.V., Belgium, or its affiliates. DirectriX and the DirectriX logo are trademarks of Agfa HealthCare NV, Belgium or its affiliates. All rights reserved. All other trademarks are held by their respective owners and are used in an editorial fashion with no intention of infringement. The data in this publication are for illustration purposes only and do not necessarily represent standards or specifications, which must be met by Agfa HealthCare. All information contained herein is intended for guidance purposes only, and characteristics of the products and services described in this publication can be changed at any time without notice. Products and services may not be available for your local area. Please contact your local sales representative at agfa.com for availability information. Agfa HealthCare diligently strives to provide as accurate information as possible, but shall not be responsible for any typographical error.

© 2015 Agfa HealthCare Corp.
All rights reserved
Published by
Agfa HealthCare Corp.
10 South Academy Street
Greenville, SC 29601 USA
5S3X2 US 00201504

AGFA 
HealthCare